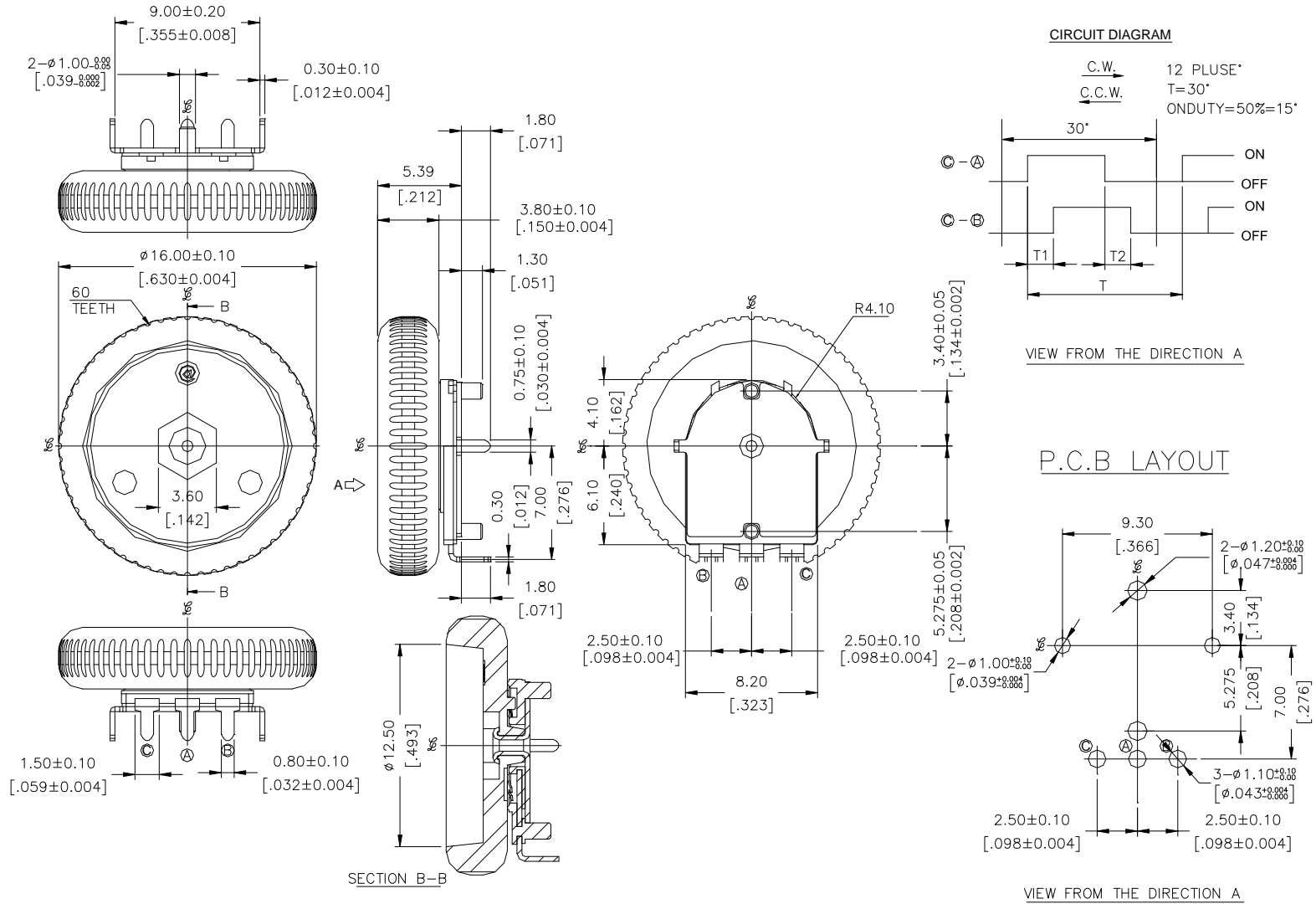


ZRE SERIES

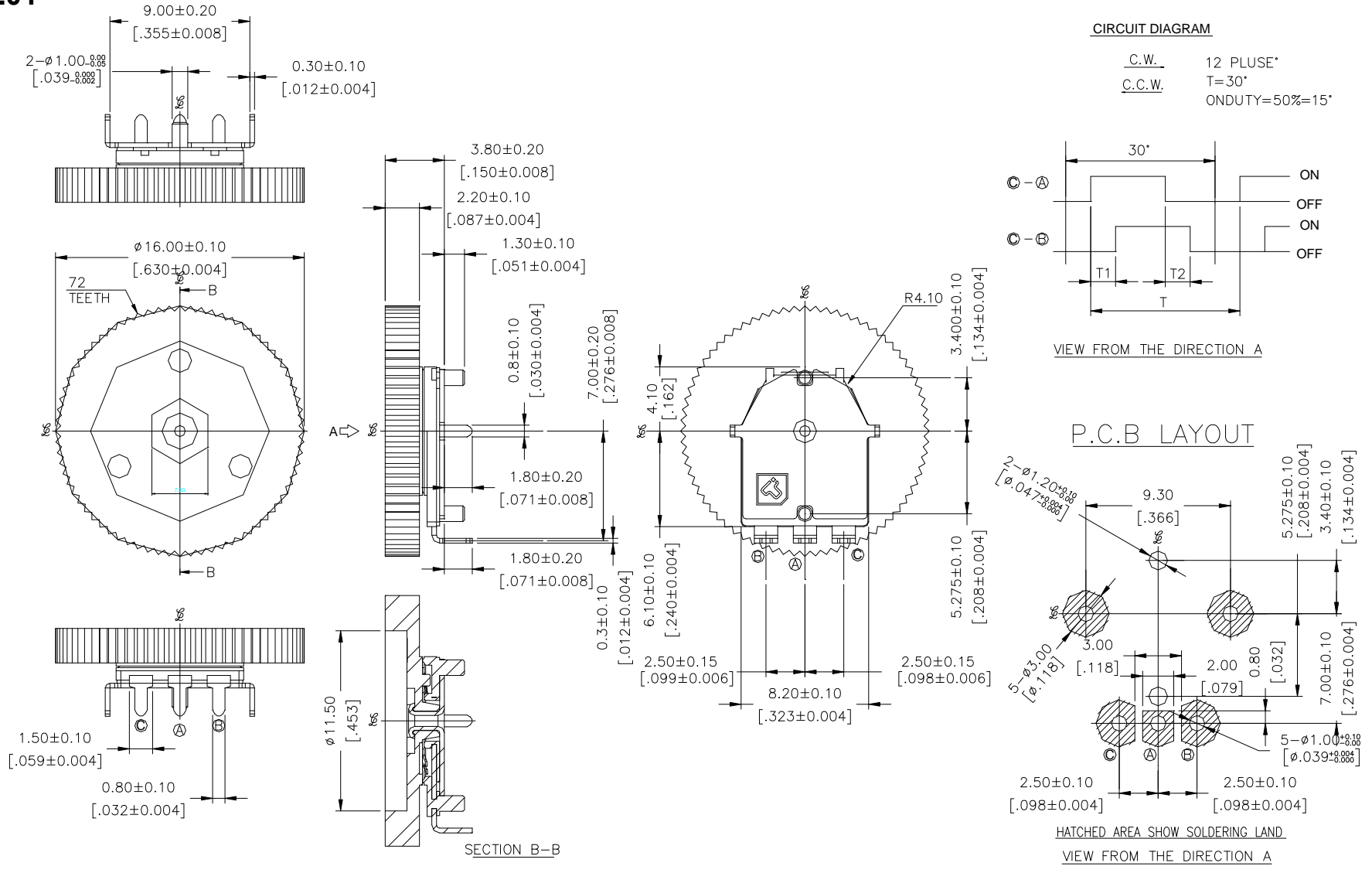
**DIMENSION**

**ZREA-100**



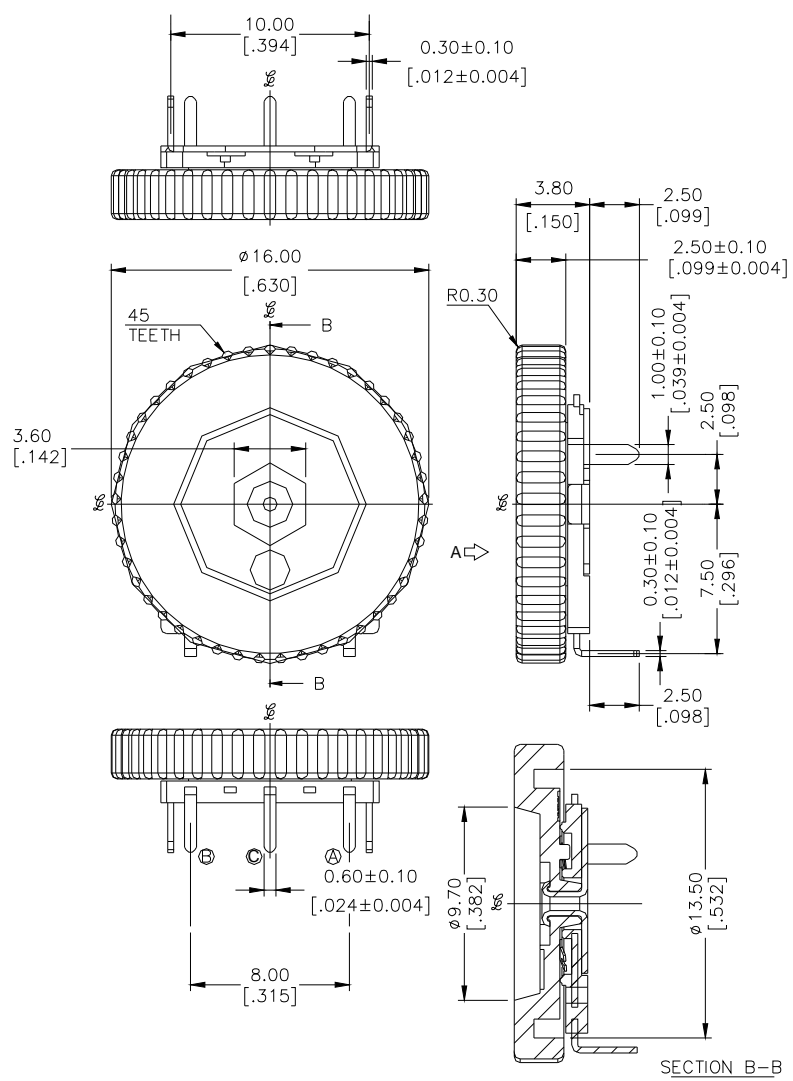
General Tolerance : ±0.2mm

**ZREA-201**



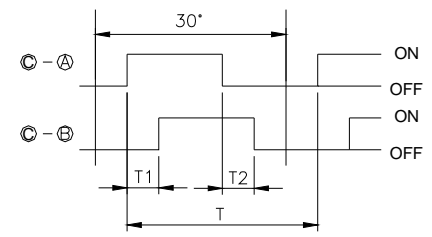
General Tolerance : ±0.2mm

# ZREB-100



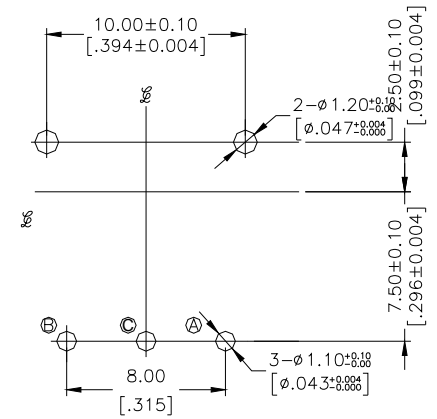
## CIRCUIT DIAGRAM

C.W. 12 PLUSE\*  
 C.C.W. T=30\*  
 ONDUTY=50%=15\*



VIEW FROM THE DIRECTION A

## P.C.B LAYOUT

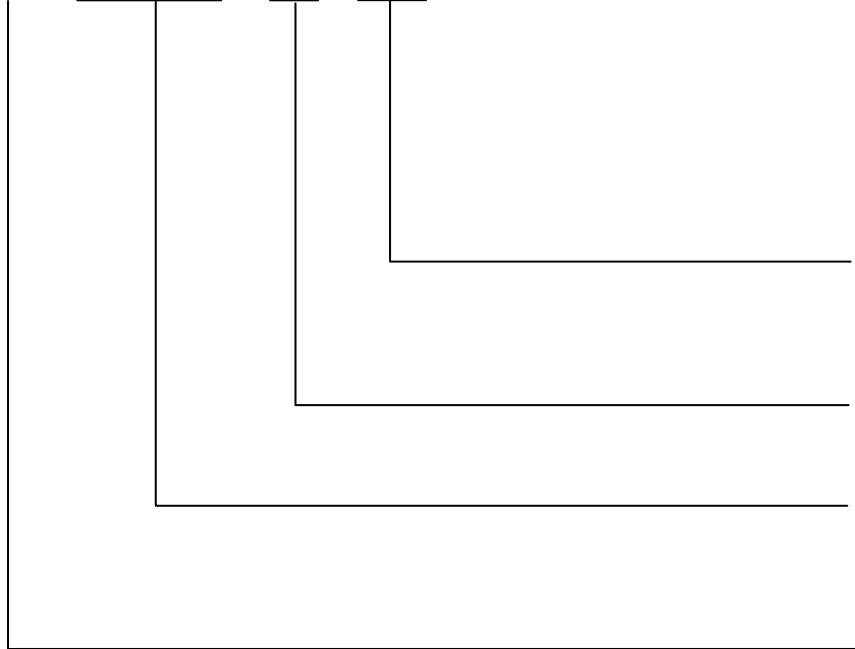


VIEW FROM THE DIRECTION A

General Tolerance : ±0.2mm

## HOW TO ORDER

ZRE □ - □ □ □ - □ - T/R



Package Style :  
 Tape & Reel

V = Lead Free Solderable

100/201 Knob Type  
 (Refer to the attached drawing)

Terminals:  
 A = Pitch 2.5mm  
 B = Pitch 4.0mm

## SPECIFICATION

### △MECHANICAL

Operation Force: 3~60gf-cm

Total Rotary Angle: 360° (12 Pulse)

Operation Temp: -30°C to +80°C

Storage Temp: -40°C to +85°C

### △ELECTRICAL

Electrical Life: 20,000 steps

Rating: 1mA, 5VDC

Insulation Resistance: 10MΩ min. (50VDC)

Dielectric Strength: 50VAC/ 1minute

## MATERIAL

△BRACKET: SPCE

△BASE: UL 94V-0 High-Temp thermoplastic  
Color: Black

△ROTOR: UL 94V-0 High-Temp thermoplastic  
Color: Black

△CONTACT: Brass with silver plated

△TERMINAL: SPCC

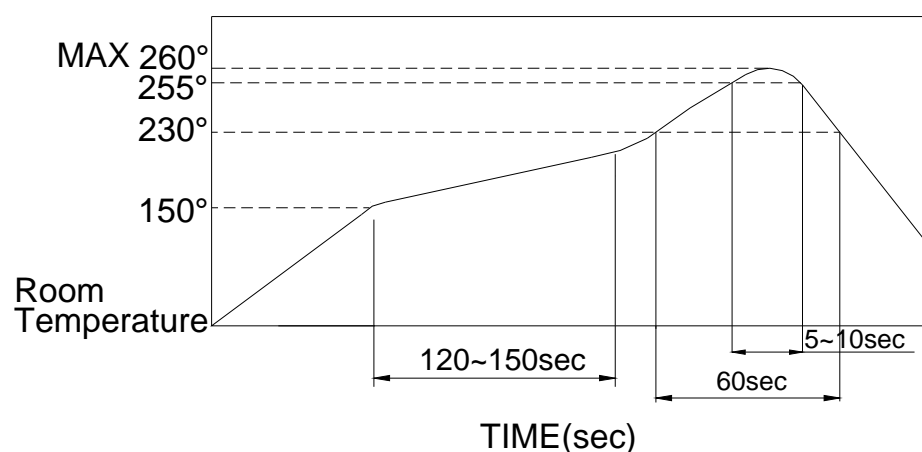
## SOLDERING PROCESS

△ HAND SOLDERING : Use a soldering iron of 30 watts, controlled at 350°C approximately 5 seconds while applying.

△ WAVE SOLDERING : Recommended solder temperature at 500°F(260°C)max. 5 seconds for through Hole type.

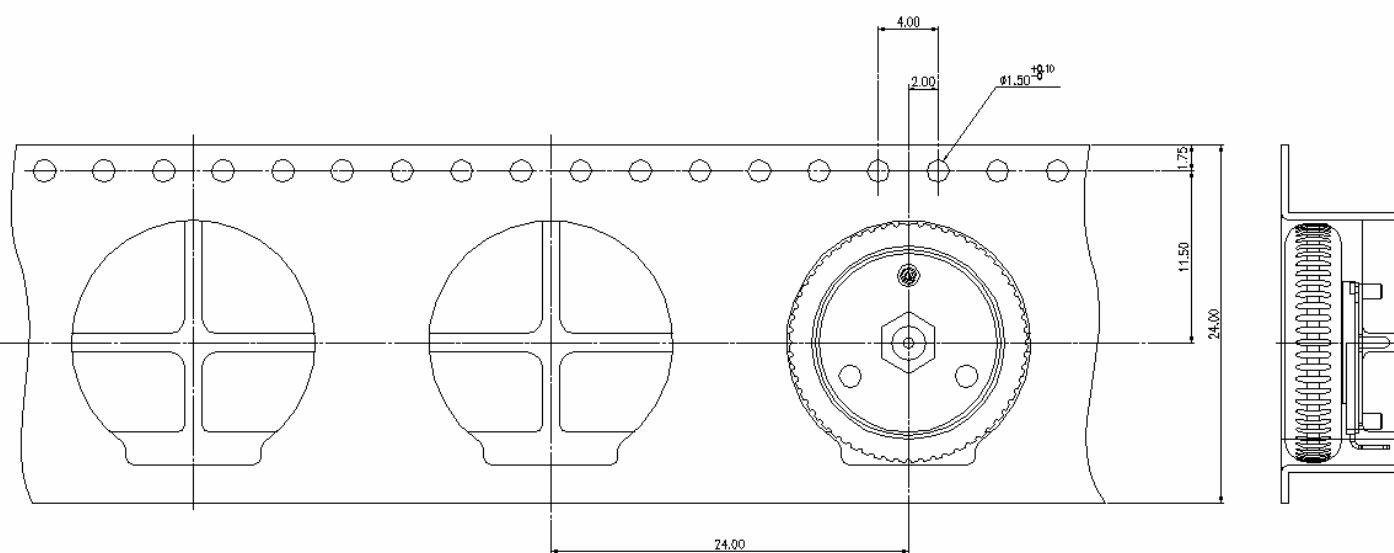
△ REFLOW SOLDERING : When applying reflow soldering, the peak temperature or the reflow oven should be set to 260°C max.

△ Temperature Profile :



## PACKING

### ZREA CARRIER



Part Number	Number Per Reel	Number Per Tube
ZREA	400	
ZREB	450	